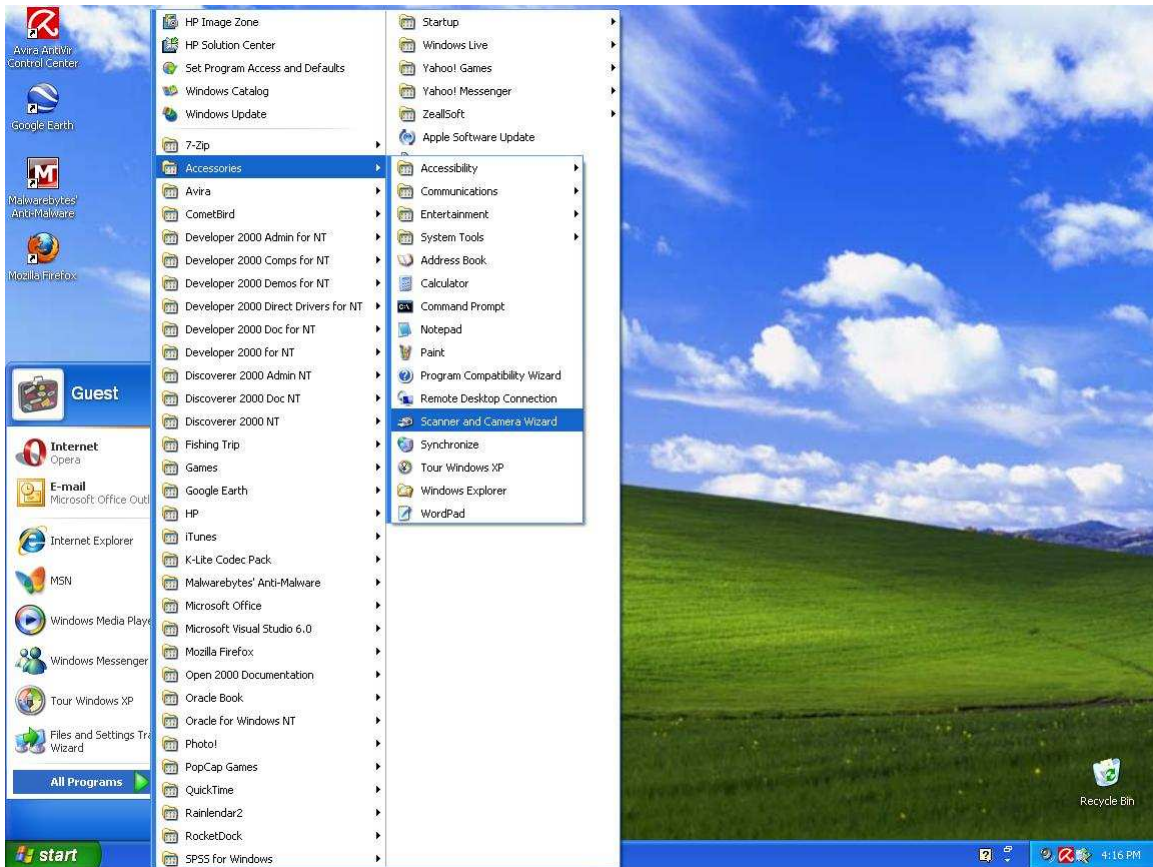
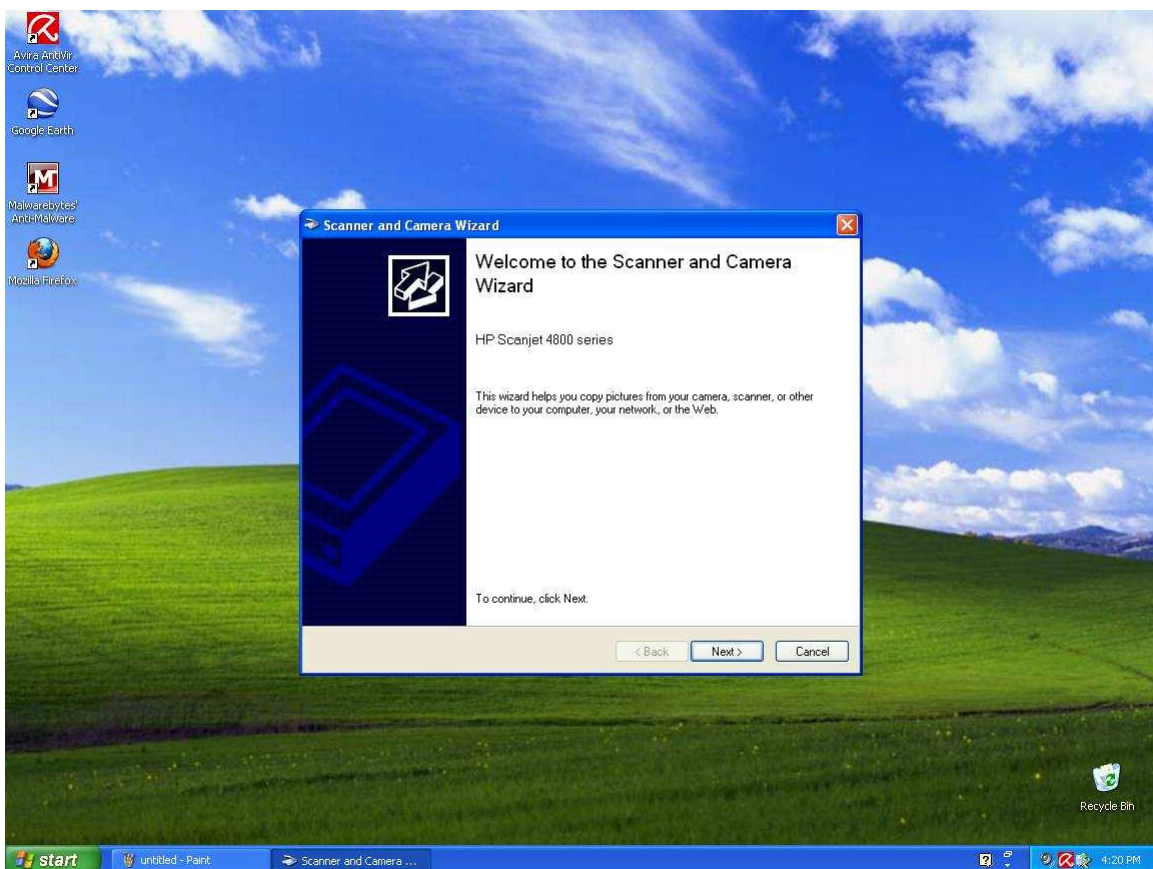


Panduan menggunakan scanner.

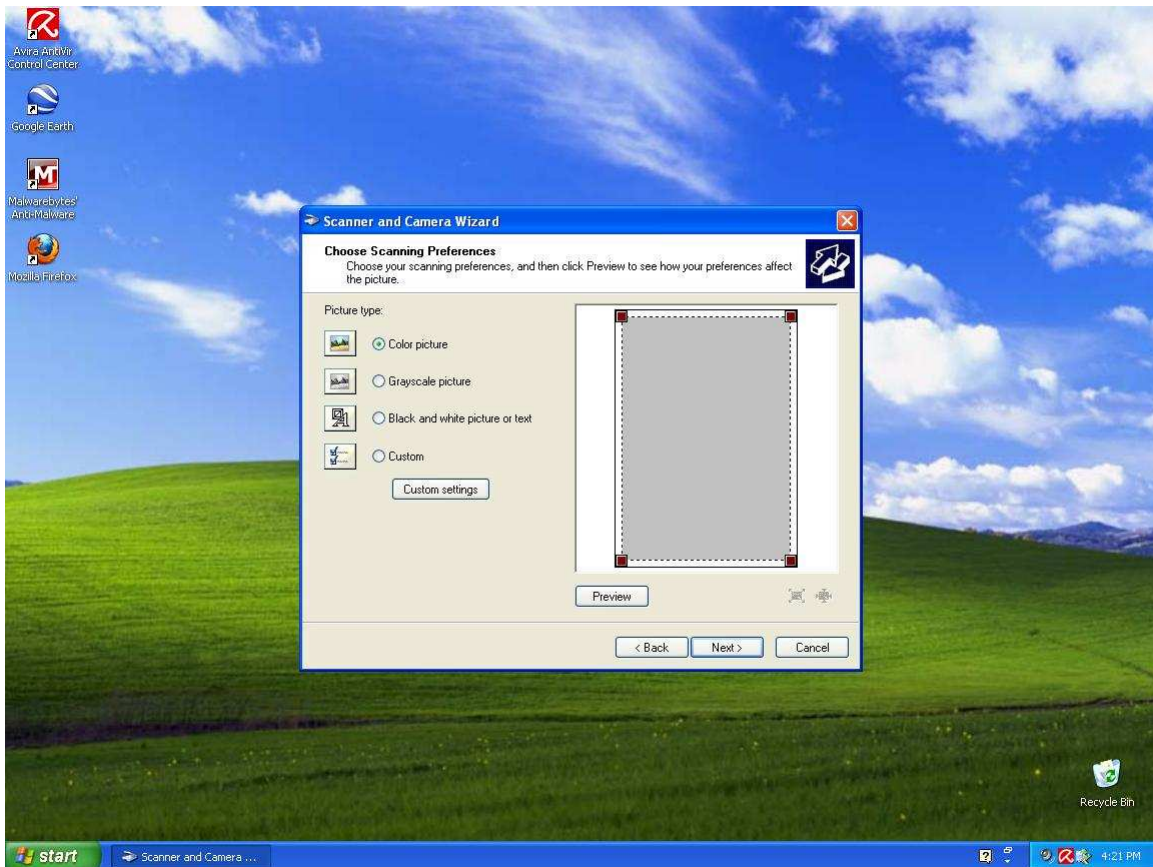
1. Pastikan scanner telah disambungkan pada computer anda.
2. Klik pada Start > Accessories > Scanner and Camera. Wizard.



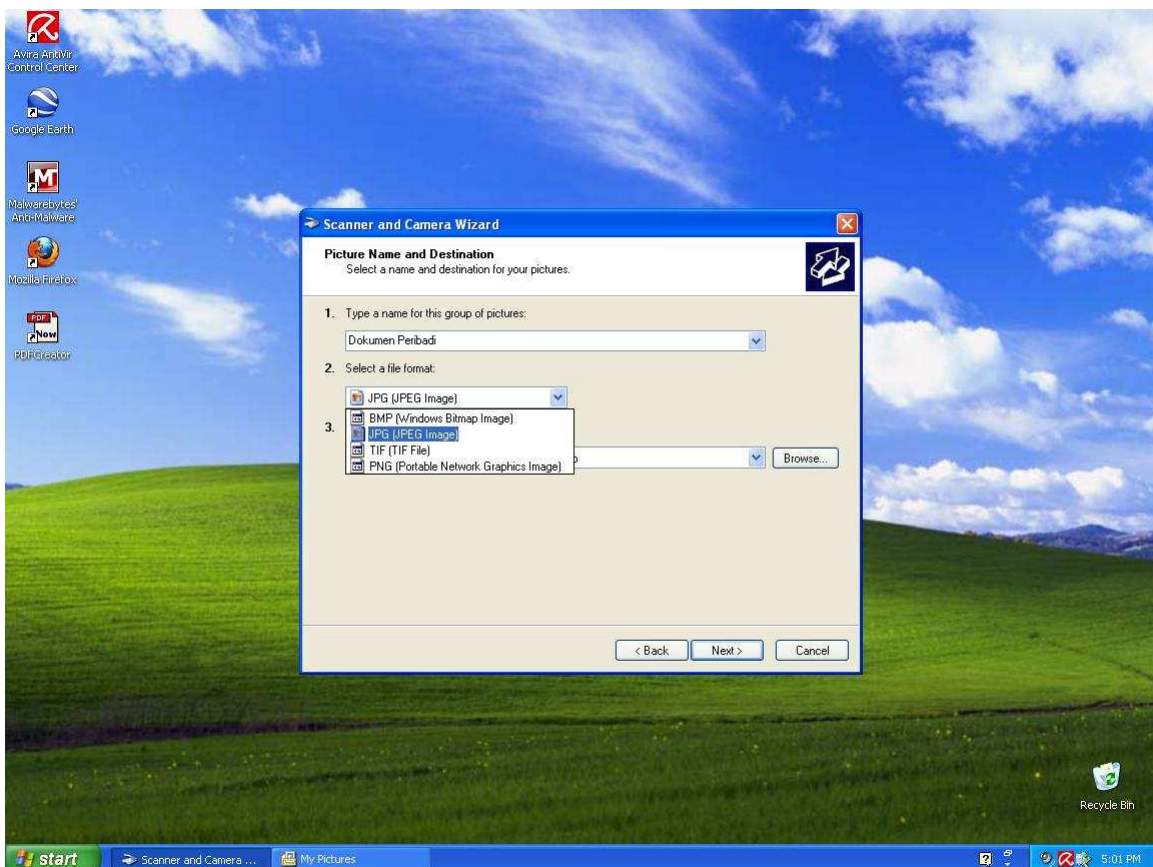
3. Klik next button untuk teruskan proses.



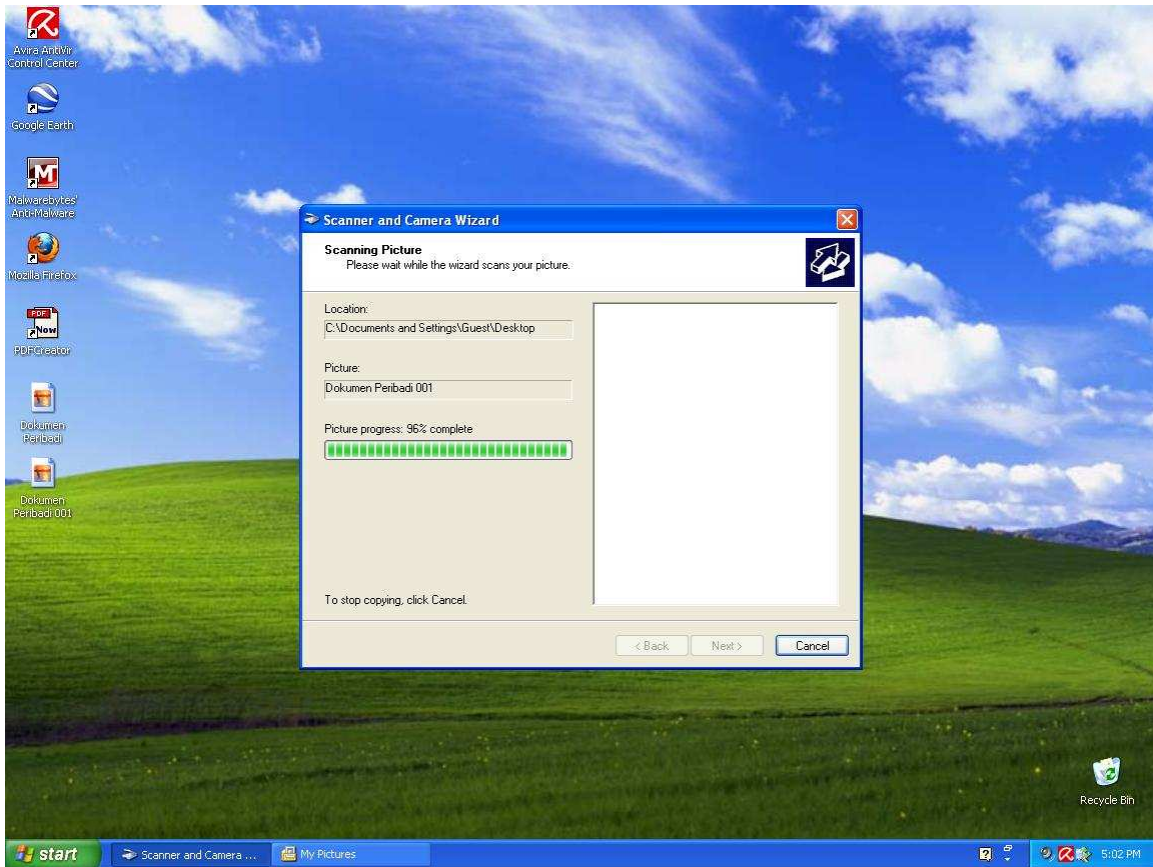
4. Klik next button untuk proses seterusnya.



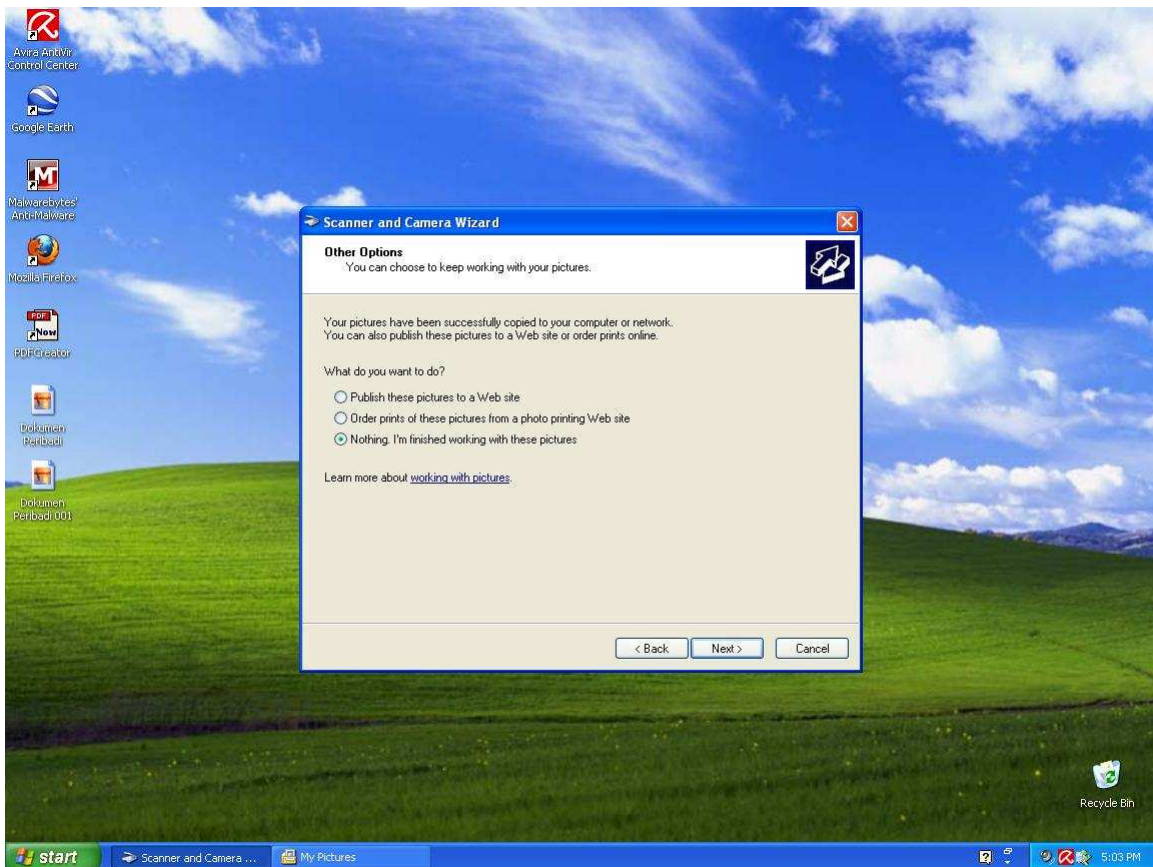
5. Masukkan nama fail dan kemudian pilih format JPEG.



6. Tunggu sehinga proses mengimbas 100% .



7. Klik next button.



8. Klik finish button kemudian upload fail yang telah di simpan ke permohonan online.

